

# SPOTTING THE SIGNS OF ADULT EXPLOITATION

## PHYSICAL SIGNS

Maybe withdrawn, show signs of abuse, or unexplained suspicious injuries.



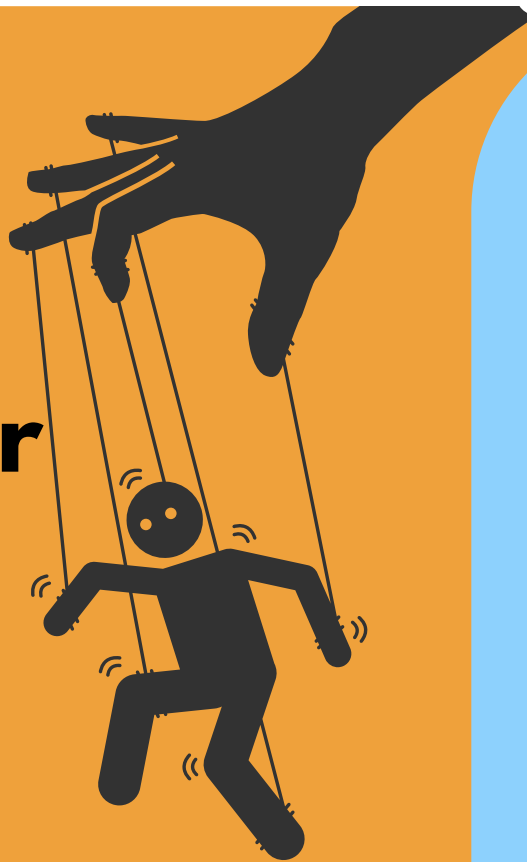
## UNUSUAL TRAVEL TIMES



Picked up or dropped off early morning or late at night.

## CONTROL

Victims may appear to be under the influence of others or unfamiliar with their surroundings.



## RESTRICTED MOVEMENTS



May not travel alone or have no documentation.

## WON'T ACCEPT HELP

Someone speaks for them or they are never alone. Can be hostile to Police and agencies.



## POOR LIVING CONDITIONS

Dirty, cramped, could live in the place they work.

## DON'T IGNORE IT, REPORT IT



Report it to Essex Police, call 101. In an emergency always dial 999.



For help and advice call the Modern Slavery Helpline on 08000 121 700.

